



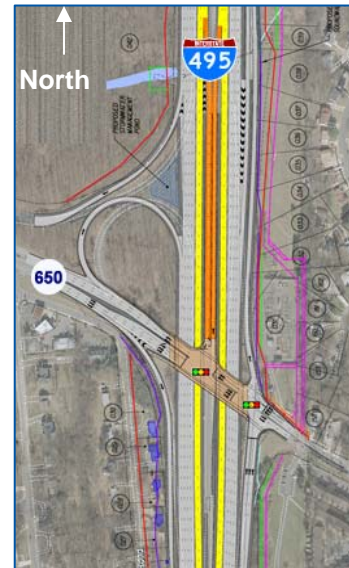
## Gallows Road: Capital Beltway HOT Lanes

### 2nd Phase of interchange bridge construction to begin in May

The Capital Beltway HOT (High Occupancy Toll) Lanes will bring the most significant improvements to the Beltway since its opening in 1964. Construction of a new **Gallows Road (Rt. 650) interchange** is necessary to accommodate the four new Beltway lanes and will include bike and pedestrian access along with access to the new HOT Lanes.

### 2nd Phase Work Begins in May 2010

Once the new Gallows Road southbound bridge over the Capital Beltway is completed, work will immediately begin on the new northbound bridge. All traffic (north and southbound) will be shifted to the new bridge so crews can begin nighttime bridge demolition of the existing Gallows Road northbound bridges. After the demolition is complete, workers will begin building the new northbound bridge. The final phase of bridge construction is scheduled to be completed in September 2011.



Abutment needs to be removed to expand Beltway

Future General Purpose Lanes

### Accelerated Construction Schedule

#### Clearing the Path for Beltway Widening

Construction crews will utilize an accelerated construction schedule for the second phase of work by combining the original three phased plan to a two phased approach.

This new accelerated construction schedule will **save up to 10 months** off the interchange bridge construction at Gallows Road and finish the Beltway widening at this location up to **20 months ahead of schedule**.

### Traffic Shift – May 2010

North and southbound traffic on Gallows Road at I-495, will be shifted to the new bridge over the Beltway in May. Two northbound lanes, towards Merrifield, will be maintained on the Gallows Road bridge over the Beltway. Southbound traffic over the Gallows Road bridge, towards Annandale, will be reduced to one lane. Motorists should expect delays traveling southbound during the afternoon rush.

### Traffic Shift: May 2010

Shift north & southbound traffic to new Gallows Road bridge

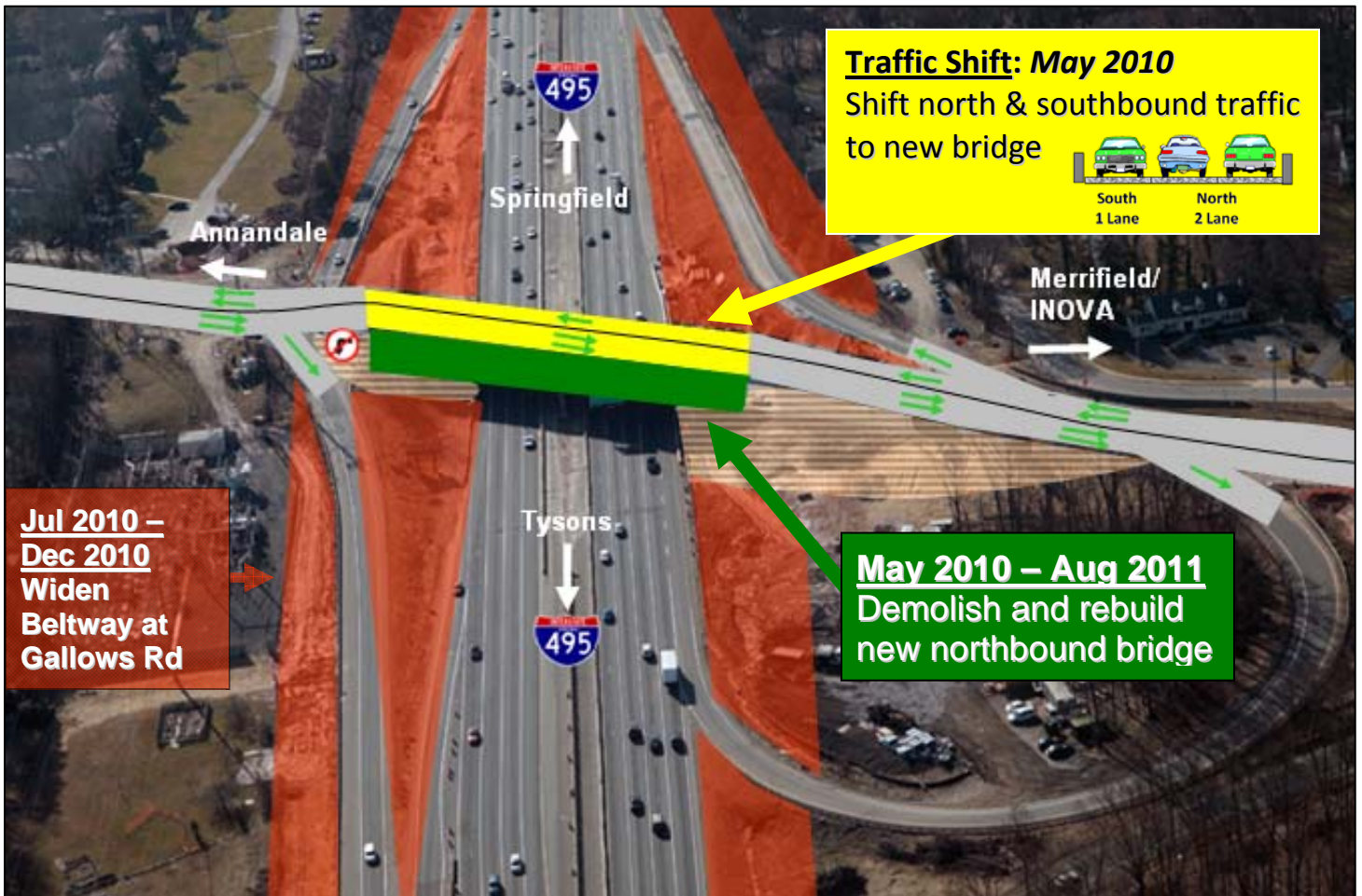


South 1 Lane North 2 Lane



## Gallows Road: Capital Beltway HOT Lanes

*2nd Phase of interchange bridge construction to begin in May*



### YOUR INFORMATION RESOURCES

VAmegaprojects.com: Sign up for project updates  
 511NorthernVirginia.org: Updated travel conditions  
 Hotline: 1-877-9595-222 E-mail: [Info@VAmegaprojects.com](mailto:Info@VAmegaprojects.com)  
 Employer Solutions: [employersolutions@vamegaprojects.com](mailto:employersolutions@vamegaprojects.com)  
[www.virginiahotlanes.com](http://www.virginiahotlanes.com): Detailed info on HOT Lanes

Sign up for  
 project updates at  
[VAmegaprojects.com](http://VAmegaprojects.com)  
**HOTLINE**  
**1-877-959-5222**