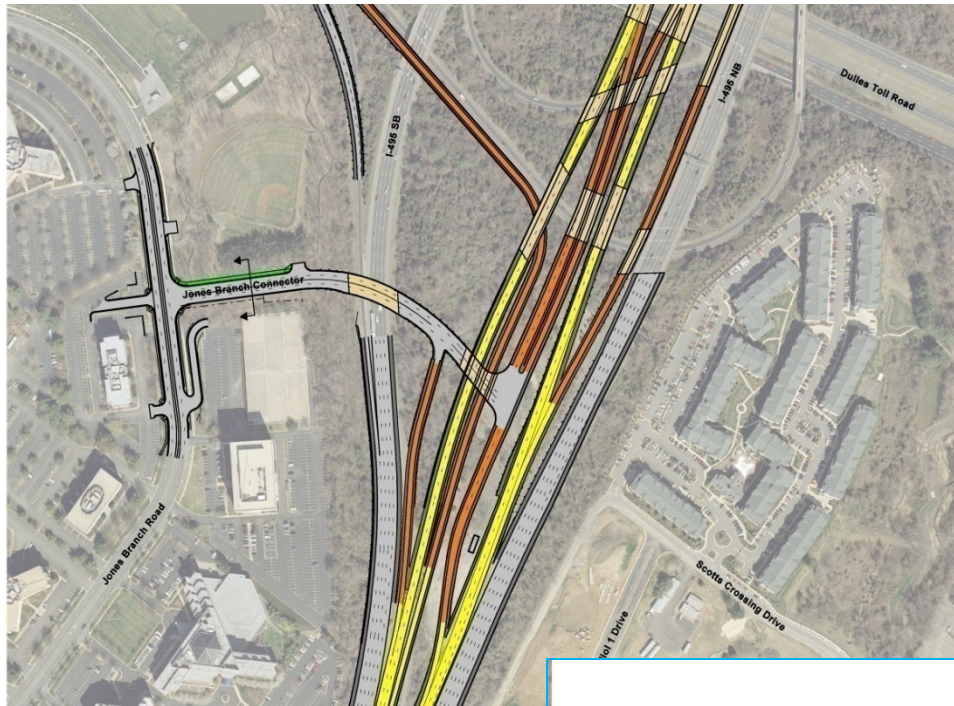


# Jones Branch Interchange Pedestrian and Bicycle Improvements



New 4 lane roadway (2 lanes in each direction) providing north- and southbound access to and from HOT Lanes

New 10 foot sidewalk on north side of road

## LEGEND

- SIDEWALK
- BICYCLE IMPROVEMENTS
- WIDE CURB LANE

